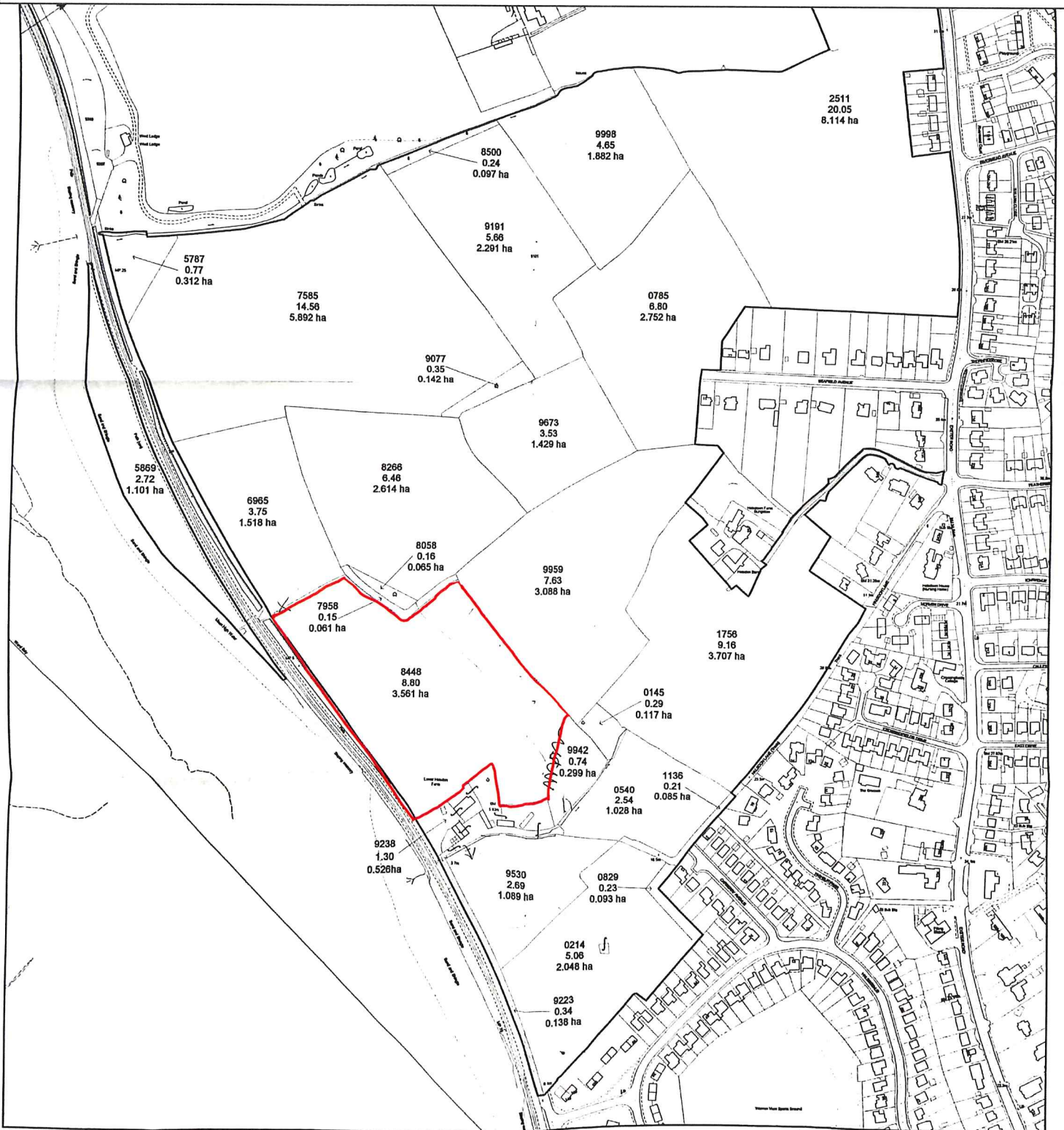


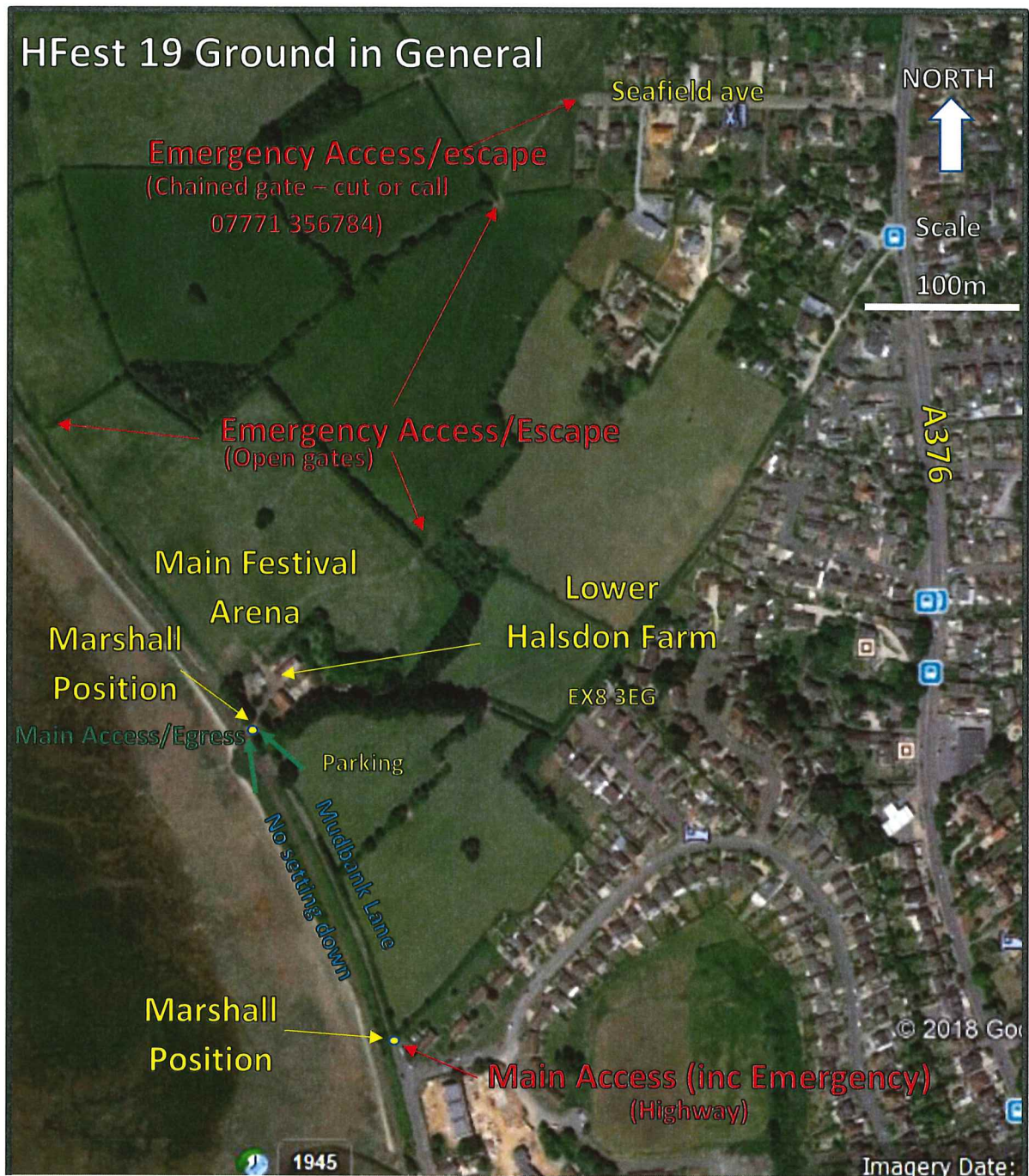
MAP SHOWING AREA OF PREMISES FOR THE SITE OF LICENSABLE
 ACTIVITIES FOR H-FEST FESTIVAL
 30TH AUGUST - 1ST SEPTEMBER



H:\Data\Mapgen\Workspace\Property\Ex Estuary Farm Tenancies\Lower Haldon Farm 2500

LOWER HALDON FARM, MUDBANK LANE EXMOUTH EX8 3EG

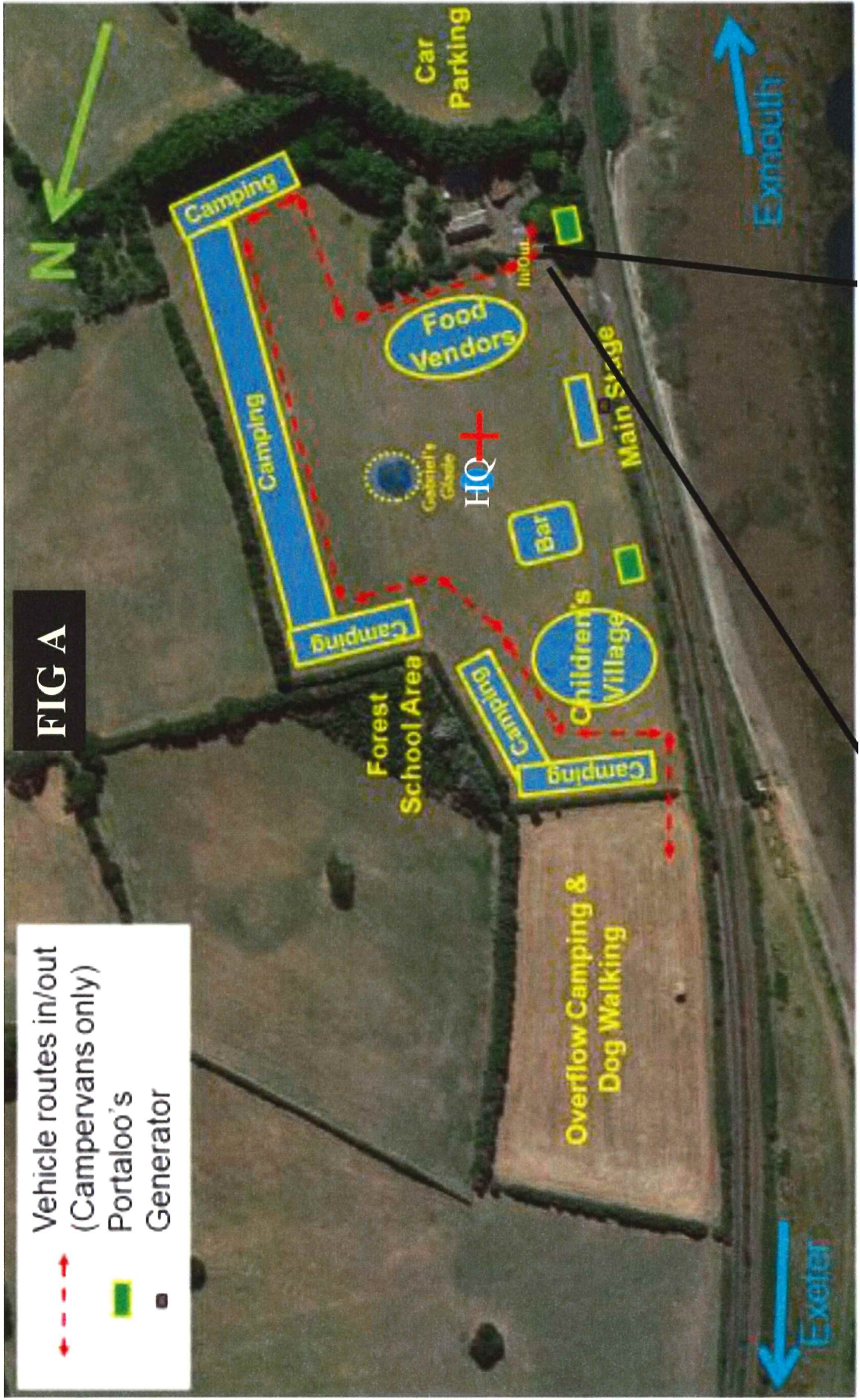
HFest 19 Ground in General

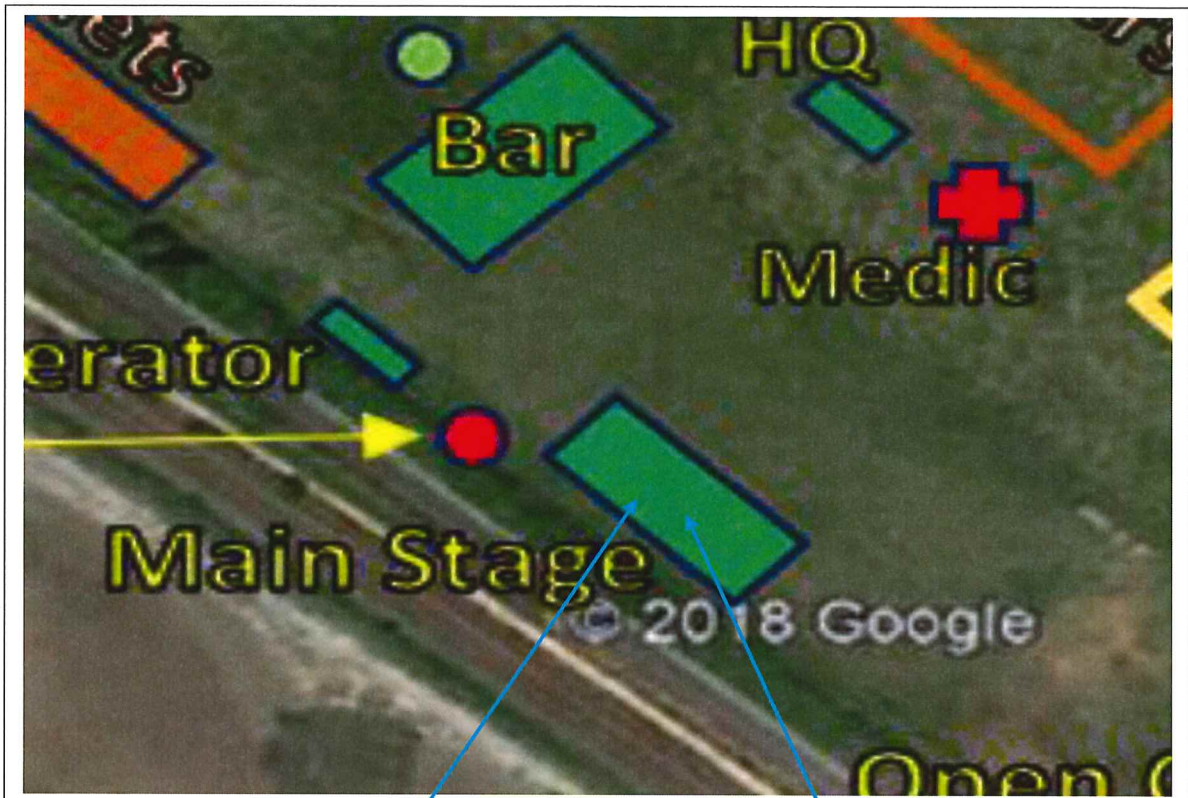


Vehicle routes in/out
(Campervans only)
 Portaloo's
 Generator



FIG A





Stage construction by Exeter based scaffold firm SAFENETZ SCAFFOLDING www.safenetz.co.uk
01392 798548.

Height: Stage height at highest elevation 1m above ground

Access: via secured ladder and safety gate located rear right of stage

Protection from elements: Stage is covered (waterproof) on 3 aspects guarding against the prevailing wind from the Exe and rain ingress from these aspects. This is fully secured by the scaffold firm with industry standard scaffold waterproofing systems. All electrical equipment is suitably placed inside of the open front and further waterproofed with professional covers (professional stage electrics team supplied by HM Royal Marines Band)

Audience: (not shown in this photo) crowd barrier will be erected approx. 2m from front of the stage to keep separation and allow for emergency access.